



# Western Society of Weed Science Newsletter

205 W. Boutz, Bldg. 4, Ste. 5, Las Cruces, NM 88005

(575) 527-1888

wsws@marathonag.com

Spring 2014

## IN THIS ISSUE:

- President's Report
- Student Liaison Report
- Fellow Awards
- Honorary Member
- Distinguished Achievement Awards
- 2014 Student Awards
- Officers & Executive Committee
- Herbicide Physiology On-line Course Offered
- Notes from the Business Office
- The Washington Report
- Program Proposal Call for International IPM Symposium
- Call for WSWS Symposia
- 2014 Membership Renewal Form
- Publications Order Form

## Sidebar highlights

- [Contact Us](#)
- [WSWS Officers & Executive Committees](#)
- [Publications](#)
- [Calendar of Events](#)



## Report from the President by Drew Lyon

The 67<sup>th</sup> annual meeting in Colorado Springs provided members with ample opportunities to hear about exciting new research in weed science, discuss issues of current concern, reconnect with colleagues and friends, and meet new people from throughout the western U.S. with interest in weed science. Monday evening we recognized five retirees, all of whom have served the profession and society well. They were: Lars Baker, Fremont County Weed & Pest; Rita Beard, USDA-NPS; Keith Duncan, New Mexico State University; Len Welch, Valent Corporation; and Bob Wilson, University of Nebraska-Lincoln.

Bob was my major professor for both my M.S. and Ph.D., so I found special significance in this year's reception.

A highlight of the annual meeting each year is the student oral and poster competitions. This year the competitions included 22 oral papers and 20 poster papers. Thanks to all the students that participated as well as the judges who volunteered their time to evaluate the competitors!

A total of 85 oral presentations and 49 posters were presented at this year's annual meeting. Research Section Chair, Andrew Kniss, and his team of project chairs and moderators prepared the meeting rooms and kept the sessions running smoothly and on time. Joel Felix, Education and Regulatory Chair, organized an informative session on using the R statistical language to analyze agricultural experiments. Joel also helped Sarah Ward as she prepared an outstanding and timely symposium on the biology and management of invasive toadflax. The poster committee (Dirk Baker, Chair) and local arrangements committee (Tim D'Amato, Chair) got the easels and poster boards delivered to the hotel and set up for the poster presentations.

Roger Gast delivered the Presidential Address at the general session. He explained how the welcoming atmosphere of the WSWS made him want to stay involved with the society, even in his current role as a global Product Development Leader for Dow AgroSciences located in Indianapolis, IN. He challenged members to find ways to serve the society no matter where they are located or what their careers entail. Roger also encouraged increased collaborations among members to find new approaches to the weed issues of the future. Lee Van Wychen provided an update on recent federal legislation affecting agriculture, including increased dollars budgeted for AFRI, Hatch, Smith-Lever, Regional IPM, NIFA, and SARE. He also provided information on the new Farm Bill and the formation of a new public-private nonprofit foundation, the Foundation for Food and Agriculture Research (FFAR), that is intended to complement USDA's research, education, extension, and economics activities. Phil Stahlman spoke on the important role that CAST has played in supporting agricultural science since its formation in 1972. The WSWS has been a society member of CAST since 1978. Brian Mihalbachler, US Fish and Wildlife; Dave Anderson, Colorado Natural Heritage Program; and Jerry Michels, Texas A&M University, presented information on various aspects of integrated weed management efforts at the US Air Force Academy and other federal lands in Colorado. The general session set the stage and prepared members for the many fine papers and discussions that followed.

With the annual meeting in Colorado Springs behind us, it's now time to look forward to the 2015 annual meeting in Portland. I welcome member input on things that we can do to improve the annual meeting. Our goal is to have a meeting that is as good as it can possibly be. For that to occur, everybody will need to heed Roger Gast's challenge and get involved in some way to make the society better.

One challenge the Board of Directors will be wrestling with in the coming year is how to reverse a recent trend of declining membership, annual meeting attendance, and paper presentations. Brian Jenks, Member-At-Large Public Sector, will be working with Phil Banks and the Board to understand the reasons for these trends and then develop strategies to reverse the trends. Your thoughts and solutions are welcome.

I believe strongly in the need to serve. I do not always make the right decisions, but I strive to make the best decisions I can with the information I have. I am fortunate to be surrounded by so many talented and friendly people in this society. I am looking forward to working with everyone to make the WSWS stronger in the coming years. Please don't hesitate to contact me with any ideas or concerns you may have. Have a fun and productive 2014. I will see you all in Portland next year.

---

## Student Liaison Report - by Marcelo Moretti and Carl Coburn

We had a great meeting in Colorado Springs with over 40 students attending the meeting to present their research. Many students participated in the poster and paper contest, and for the contest winners, we would like to congratulate you for your excellent work. The WSWS also has an Outstanding Student's Scholarship Program, designed to promote student attendance and attract new students to the meeting. We would like to congratulate the 2014 outstanding scholarship award winners: Hally Berg, Ashley Cunningham, and Krista Ehlert, and encourage more students to apply for the scholarship this fall.

The Student Silent Auction was a success, and for the first time it will completely fund next year's Student's Scholarship Program. The success of the auction was made possible thanks to the donors and the bidding participants. A special thanks to Helena Chemical Company, Marrone Bio Innovation, Trimble, United Phosphorus Inc., DowAgroSciences, Bayer, Dr. Joe DiTomaso, Dr. Clyde Elmore, the Roncoroni Brothers, and many others who donated items for the auction. We raised over \$3000 thanks to the society members who were eager to place a bid until the last second of the auction. This was only the third auction and because of its success, we will continue this project next year in Portland, Oregon. We hope you will maintain your level of support as we expand on this year's auction.

This year Craig Beil concluded his term as student liaison, and is now pursuing a PhD program at Colorado State University. Many thanks to Craig for his dedication to the WSWS, and we hope to carry on with the excellent work he has done. Be sure to congratulate Carl Coburn of the University of Wyoming, who was elected as the new Student Liaison Chair-Elect. Carl and I will be working to increase the involvement of students on the WSWS board as well as organizing the 2015 silent auction.

Students, make sure to answer the e-mail survey. Your opinion and comments are very important to improve the student activities. Also, we are looking for volunteers to help in the public relations committee.

You can also like us on Facebook ([Western Society of Weed Science Student Section](#)). You can share some information about your research on our Facebook page! Carl and I welcome suggestions and comments regarding the student events, the annual meeting, the silent auction, Facebook page, or ways to more actively participate in the society.

Marcelo Moretti, Chair  
[mlmoretti@ucdavis.edu](mailto:mlmoretti@ucdavis.edu)

Carl Coburn, Chair Elect  
[ccoburn2@uwyo.edu](mailto:ccoburn2@uwyo.edu)

### Contact Us

#### Newsletter Editor

Carl Libbey

Washington State University

Mt. Vernon, WA 98273

(360) 848-6139

[libbey@wsu.edu](mailto:libbey@wsu.edu)

### WSWS Officers and Executive Committees

#### President

Drew Lyon

Washington State University

PO Box 646420

Pullman, WA 99164-6420

[drew.lyon@wsu.edu](mailto:drew.lyon@wsu.edu)

Awards, Site Selection

#### President-Elect

Joe Yenish

Dow AgroSciences

1001 Calendula Circle

Billings, MT 59105

[jpyenish@dow.com](mailto:jpyenish@dow.com)

Program, Poster,  
Publications, Student Paper  
Judging, Local Arrangements

#### Immediate Past President

Roger Gast

Dow AgroSciences

9330 Zionsville Rd

Indianapolis, IN 46268

[regast@dow.com](mailto:regast@dow.com)

Fellows & Honorary  
Members, Sustaining  
Members, Nominations

#### Secretary

Curtis Rainbolt

BASF Corporation

4763 N Pacific Ave

Fresno, CA 93705

[curtis.rainbolt@basf.com](mailto:curtis.rainbolt@basf.com)

#### Necrology

#### WSSA Representative

Pat Clay

Valent USA

7498 N. Remington Ave.

Suite 102

Fresno, CA 93711

[Pat.Clay@valent.com](mailto:Pat.Clay@valent.com)

Legislative

### CAST Representative

**Phil Westra**

Colorado State University  
112 Weed Lab  
Fort Collins, CO 80523  
cows19@comcast.net

### Member-At-Large

#### Public Sector

**Brian Jenks**

North Dakota State University  
5400 Hwy 83 S.  
Minot, ND 58701

brian.jenks@ndsu.edu

#### Finance

### Member-At-Large

#### Private Sector

**Michael Hubbard**

Kootenai Valley Research  
4181 District Five Rd  
Bonners Ferry, ID 83805

hubbard.kvfr@gmail.com

#### Herbicide Resistant Plants

### Research Section Chair

**Ed Davis**

Montana State University  
334 Johnson Hall  
Bozeman, MT 59717-3120  
edavis@montana.edu

### Research Section Chair-Elect

**Jane Mangold**

Montana State University  
PO Box 173120  
Bozeman, MT 59717

jane.mangold@montana.edu

### Education Section Chair

**Kirk Howatt**

North Dakota State University  
NDSU Dept 7670  
PO Box 6050

Fargo, ND 58108-6050

kirk.howatt@ndsu.edu

#### Education

#### Public Relations

### Education Section Chair-Elect

**Sandra McDonald**

Mountain West Pest  
2960 Southmoor Drive  
Ft. Collins, CO 80525

Sandra@MountainWestPest.com

## WSWS 2014 Fellow Awards - by Rick Boydston



**Dr. Robert "Bob" Stougaard** is a Professor of Weed Science at Montana State University in Kalispell, MT. Bob received his B.S. in soil science from the University of Wisconsin in 1978 and initially worked as a sales representative for Shell Chemical in Illinois. Bob earned his M.S. in Weed Science from Southern Illinois University and Ph.D. in Weed Science from the University of Nebraska. He joined the University of Nebraska as an Extension Weed Specialist from 1987 to 1991.

Bob has been located at the Northwestern Ag Research Center in Kalispell for the past 23 years and is currently serving as the Superintendent of the station. His main areas of interest and expertise are integrated weed management in wheat, barley, canola and specialty crops. Of particular note were a series of highly referenced papers on the effects of wheat seed size, quality, and seeding rate on wheat and wild oat interference. Bob has expanded his research program to other disciplines, including entomology, plant pathology, and variety development, in order to serve the needs of the Montana clientele. Bob's research is relevant and addresses grower problems with a practical approach. As a result, he is highly respected by growers, crop consultants, and university research and extension colleagues. Bob has authored numerous extension publications, abstracts, and journal articles and has mentored graduate and undergraduate students.

Bob has been and continues to be a very active and important member of the WSWS. He has presented numerous times at WSWS and has served in leadership roles on the Board of Directors as Secretary, twice as Member-at-Large, and served as Agronomic Research Section Chair, Poster Committee Chair, and Placement Committee Chair. He has also served as an Associate Editor for Weed Technology, and served on the Awards committee and Resolutions committee of the WSSA.

**Dr. Robert "Bob" Norris** is an Emeritus Professor, UC-Davis. Bob was raised in the U.K. and graduated with a B.S. in Horticultural Botany from Reading in 1960. He did his graduate work at the University of Alberta in Crop Ecology and completed a Post Doctorate program in Horticulture at Michigan State University in 1967.

He joined U.C. Davis Botany department in 1967 and retired from the U.C. Davis Vegetable Crops Department in 2001. During his career at U.C. Davis, Bob taught Botany for non-majors, Weed Science, Weed Biology and Ecology, and undergraduate and graduate level IPM courses. Robert was one of the founding members of the U.C. IPM program and author of the only IPM textbook used for undergraduate teaching in the U.S. Through his research, he has developed and influenced weed management strategies in alfalfa and sugar beets and is considered a leading expert on soil seed banks. He is well known for his zero tolerance philosophy of letting weeds produce seed.

Bob is a Fellow of the WSSA and is an Honorary member of the California Weed Science Society. He has served as a reviewer for Weed Research, Journal of Applied Ecology, and Weed Technology (associate editor 13 years), and Weed Science (associate editor 4 years). He has also been active in the Master Gardeners program for over 30 yrs.

Bob has served the WSWS in many capacities; chaired the Research section, chaired the Chemical and Physiology section twice, and was the "Senior Ambassador" representing WSWS at the 2011 Weed Olympics in Knoxville, TN. Bob was editor of the WSWS Progress report in 1979. He has been active in WSWS for more than 40 years and made numerous presentations.



## 2014 WSWS Honorary Award Member



**Dr. Dave Armstrong** has been the resident Naturalist at Sylvan Dale Guest Ranch in Loveland, CO since 1984. He received a B.S. from Colorado State University in 1966, M.A.T. degree from Harvard in 1967, and Ph.D. in Systematics and Ecology from the University of Kansas in 1971. Dr. Armstrong has had a very distinguished career and has numerous accomplishments. He has worked with Colorado State University, University of Northern Colorado, and the University of Colorado in Environmental studies, Natural Science, and Biology programs. He has served

as associate curator of the University Museum, University of Colorado, the consulting curator at Denver Museum of Natural History, and as a senior scientist at the Rocky Mountain Biological Lab. Dr. Armstrong has taught numerous courses in natural science, ecology, mammalogy, and biology at the University of Colorado, supported and served on numerous graduate student committees, and has a lengthy publications list.

The WSWS particularly recognizes Dr. Armstrong's contributions to the Invasive Weeds Short Course as a special trainer. Dave has been a cornerstone of the Western Invasive Weed Short Course, not only by hosting the perfect venue at Sylvan Dale Ranch, but by providing insight into the practice of weed management. Dave has worked with the short course team to establish a long-term restoration plot where they have been able to demonstrate weed management combined with native grass establishment to participants. It has required considerable resources from the ranch in order to establish and maintain the plots. It was Dave's commitment to the goals of environmental education and improvement that made this possible. His knowledge about the flora, fauna and geology of Sylvan Dale Guest Ranch and the surrounding area has enhanced the experience for participants and trainers alike.

---

## Distinguished Achievement Awards - by Richard Arnold

### Charlie Hicks-WSWS Outstanding Weed Scientist Private-Sector



**Charlie Hicks** is a Senior Tech Service Specialist with Bayer CropScience and has been involved in Weed Science for nearly 20 years. Charlie is extremely knowledgeable, considerate of other people around him, and the consummate weed science professional. He is a frequent presenter at WSWS annual meetings, once successfully presenting three oral presentations in one meeting to cover his topics of expertise as well as filling in for another Bayer speaker who couldn't make it. Charlie champions his territory with findings and results that are

uniquely important and vital to his area. Nominees of Charlie used the words insightful or insights, as he has just the right picture that speaks a thousand words on what he's observing and sharing with others. His current handling of the "What's New in Industry" session is an excellent example of his commitment to the WSWS and its members. Additionally, he is an avid mentor for graduate students and has served as chairman of several committees. It is very gratifying and appropriate to have Charlie Hicks as the Outstanding Weed Scientist for the Private sector at the 2014 WSWS meeting being held in his home state of Colorado.

### Treasurer / Business Manager

**Phil Banks**

205 W. Boutz Road  
Bldg 4, Ste 5  
Las Cruces, NM 88005  
[wsws@marathonag.com](mailto:wsws@marathonag.com)

### Constitution & Operating Procedures Representative

**Corey Ransom**

Utah State University  
4820 Old Main Hill  
Logan, UT 84322-4820  
[corey.ransom@usu.edu](mailto:corey.ransom@usu.edu)

### Webmaster & Web Editor

**David Krueger**

Apex WebStudio LLC  
PO Box 91235  
Raleigh, NC 27675  
[david@apexwebstudio.com](mailto:david@apexwebstudio.com)

### Student Liaison

**Marcelo Moretti**

University of California -  
Davis  
Dept. of Plant Sciences, MS-4  
292 Robbins Hall  
Davis, CA 95616  
[mmoretti@ucdavis.edu](mailto:mmoretti@ucdavis.edu)

### Student Liaison Chair-elect

**Carl Coburn**

University of Wyoming  
Dept. 3354 1000 University  
Laramie, WY 82071  
[ccoburn2@uwyo.edu](mailto:ccoburn2@uwyo.edu)

### Science Policy Director

**Lee Van Wychen**

The National and Regional  
Weed Science Societies  
5720 Glenmullen Place  
Alexandria, VA 22303  
(202) 746-4686  
[Lee.VanWychen@WSSA.net](mailto:Lee.VanWychen@WSSA.net)

### Publications

WSWS ONLINE EDUCATION  
<http://passel.unl.edu/pages/index2col.php?category=weedscience#>

WSSA Journals Website Online  
[www.WSSAJournals.org](http://www.WSSAJournals.org)

## Calendar of Events

**4<sup>th</sup> International Symposium  
on Weeds and Invasive Plants**  
May 18-23, 2014  
Montpellier, France  
[www.ansespro.fr/invasiveplants2014/](http://www.ansespro.fr/invasiveplants2014/)

**2nd International Workshop  
on Weeds and Invasive Plants**  
June 24-28, 2014  
Pyrenees, Spain  
<http://andinallanos.weebly.com/>

**Organic Agriculture: Clues for  
Weed Prevention & Control**  
July 29-30, 2014  
Vigo, Spain  
<http://webs.uvigo.es/organic-agriculture/>

**Meeting the Challenge:  
Predicting, Detecting, and  
Controlling Invasive Plants**  
September 16-17, 2014  
University of Washington  
Botanic Gardens  
Seattle, Washington  
[www.bit.ly/invplants2014](http://www.bit.ly/invplants2014)

**Weeds Across Borders  
International Conference on  
Invasive Species**  
October 14-17, 2014  
Ottawa, Canada  
[http://wssa.net/wp-content/uploads/Weeds-Across-Borders-2014\\_Call-for-Abstracts.pdf](http://wssa.net/wp-content/uploads/Weeds-Across-Borders-2014_Call-for-Abstracts.pdf)

**Weed Science Society of  
America Annual Meeting**  
February 2015  
Lexington, Kentucky  
[www.wssa.net](http://www.wssa.net)

**Western Society of Weed  
Science Annual Meeting**  
March 9-12, 2015  
Portland, Oregon  
[www.wsweedscience.org](http://www.wsweedscience.org)

## Ed Davis - WSWs Professional Staff



**Ed Davis** is a Cropland Weed Specialist at Montana State University. Ed is a solid professional with extensive knowledge in weed management and has high standards for research; he is an enjoyable and a polite person ready to help. Ed's research focuses on small grains, pulse crops, fallow, and forage crops and has extensive experience and understanding on rangeland and non-cropland weed management. His knowledge of weed biology, ecology, and management is outstanding. He is extremely experienced on herbicides and their integration into sustainable weed management programs. As such, he is an invaluable member of the Montana State research and extension community and serves as a liaison between MSU Faculty and graduate students, farmers across the state, and agrichemical industry reps. Ed was first appointed a Weed Science Research Associate in 1984. Over the years, Ed has collaborated with many other MSU Professors, Research Associates, and Technicians. Among his many activities, Ed conducts field and greenhouse trials, oversees workers, assists undergraduate and graduate students, operates and maintains project equipment and machinery, and compiles research results which he presents at professional and outreach meetings such as professional weed societies, Montana State agricultural associations, as well as regional and local grower meetings. He has been invited to provide research updates and data exchanges by many agrichemical companies. Every year, Ed's dedication and effectiveness are reflected in the more than 45 field trials he conducts, the 35,000 miles he drives across Montana, and the competitive and non-competitive funding he secures to support this research. Ed is an active member of the Weed Science community including the Weed Science Society of America, the Western Society of Weed Science, and the Montana Weed Control Association. Between 1983 and 2012, Ed's service in the WSWs spanned from Agronomic Crops Section Chair, to Session Moderator, and to Graduate Student Paper/Poster judge.

## Rita Beard - Weed Manager

In her role as the National Park Service's (NPS) service-wide Invasive Species Coordinator, **Rita Beard** not only oversaw the operation and implementation of 18 Exotic Plant Management (EPMT) field programs, but was also responsible for guiding the entire NPS on the management and development of policy related to invasive plants. Rita was instrumental in organizing and expanding the NPS's invasive plant program, actively working to increase the number of NPS EPMT's, and the amount of funding available for weed management as well as communicating the importance of invasive plant management to NPS leadership. Rita's efforts in her role with the NPS have inspired several generations of weed managers. Rita is one of those rare managers for which no problem is too large or too small, whether it is taking just a few moments of her time to make a control recommendation to a manager in the field, or working to assist an entire network of parks with the development of a programmatic invasive plant management plan. Additionally, Rita has always supported the professional development of her field staff, encouraging them to attend and participate in professional meetings and societies (a number of them are now active members of WSWs), and by emphasizing the importance of utilizing current research and technology to make management decisions. Rita's tireless efforts to advance the cause of invasive plant management not only in the Western United States, but across the entire country, make her an excellent candidate to receive the honor of the Western Society of Weed Science's Weed Manager of the year for 2014.



# 2014 Student Paper and Poster Awards by Kelly Young

At the 2014 meeting, 21 students presented papers: ten in Weeds of Range and Natural Areas and Weeds of Horticultural Crops, and 11 in Weeds of Agronomic Crops and Basic Biology and Ecology. Eighteen graduate students and two undergraduates presented posters: eight graduates and two undergraduates in Weeds of Range and Natural areas and Weeds of Horticulture Crops, and 10 graduate entries in Agronomic Crops, Teaching and Technology, and Basic Biology and Ecology.

Twenty judges were divided into four teams, two teams judging posters and two teams judging oral papers. The committee would like to thank the judges that generously volunteered their time: Jonathon Rife, Jacob Jarrett, Stephen Valenti, Ryan Rector, James Leary, Robert Norris, Mayank Malik, Joe Di'Tomaso, Patricia Prasifka, Brad Lindenmayer, Mithila Jugulam, Guy Kyser, Vijaya Varanasi, Ryan Rapp, Anita Dille, Todd Neel, John Fenderson, Timothy Miller, and Rodney Tocco.

## Student Paper Contest Winners

### Weeds of Range and Natural Areas & Weeds of Horticultural Crops



- 2<sup>nd</sup> - **Thomas Getts**, Colorado State University, Fort Collins
- 1<sup>st</sup> - **Kallie Kessler**, Colorado State University, Fort Collins
- 3<sup>rd</sup> - **Jason Adams**, North Dakota State University, Fargo

### Weeds of Agronomic Crops & Basic Biology and Ecology



- 3<sup>rd</sup> - **Curtis Hildebrant**, Colorado State University, Fort Collins
- 2<sup>nd</sup> - **Vipan Kumar**, Montana State University, Huntley
- 1<sup>st</sup> - **Derek Sebastian**, Colorado State University, Fort Collins

## Student Poster Contest Winners

### Weeds of Range and Natural Areas & Weeds of Horticultural Crops

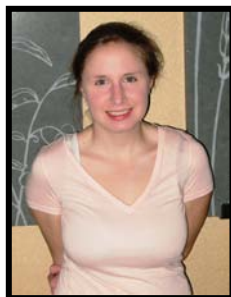


- 1<sup>st</sup> - **Julia Workman**, University of Wyoming, Laramie
- 2<sup>nd</sup> - **Jason Adams**, North Dakota State University, Fargo

### Weeds of Agronomic Crops, Teaching and Technology Transfer, & Basic Biology and Ecology



- 3<sup>rd</sup> - **Nevin Lawrence**, Washington State University, Pullman
- 2<sup>nd</sup> - **Cody Creech**, University of Nebraska-Lincoln, North Platte
- 1<sup>st</sup> - **Vipan Kumar**, Montana State University, Huntley



### Undergraduate Student Poster Contest Winner

**Hannah Tomlinson, University of Idaho, Moscow**

## 2014-2015 WSWS Officers and Executive Committee



Seated: Jane Mangold, Sandra McDonald, Joe Yenish, Roger Gast, Drew Lyon, Brian Jenks  
Standing: Phil Westra, Kirk Howatt, Corey Ransom, Pat Clay, Ed Davis, Marcelo Moretti, Carl Coburn  
Not Pictured: Curtis Rainbolt, Michael Hubbard, and Phil Banks.

---

### Herbicide Physiology Distance Learning Class Offered

**PSPP 546 Herbicide Physiology** is a distance delivery graduate course to be offered in Fall semesters of even-numbered years (next offering 2014). The course is taught by Profs. William Dyer and Tracy Sterling (Montana State University) and Scott Nissen (Colorado State University). We will cover topics in herbicide classification, herbicide mode of action, resistance mechanisms, and practical diagnosis of field situations. Prerequisites include upper division courses in biochemistry and plant physiology, or consent of the instructors. The course is designed for students without traditional access to this course material, and is not designed to replace existing, on-campus courses at other institutions.

Please see <http://btc.montana.edu/courses/asp/descrip3.aspx?TheID=104> or contact Dr. William E. Dyer at [wdyer@montana.edu](mailto:wdyer@montana.edu) for more information.

---

### Notes from the Business Office by Phil Banks

If you did not attend the past meeting in Colorado Springs and have not done so already, you should renew your WSWS membership for 2014. You can do this going to the website ([www.wsweedsociety.org](http://www.wsweedsociety.org)), look under Membership at the top of the page, then Current Member Renewal. You can also renew by sending me a check for \$ 30.00 along with your name and current contact information (form is included in this Newsletter). If you have changed address, job, phone number, or e-mail address, please take the time to update your information. Let me know if you have any questions or need additional information.

Also, you can help support WSWS activities by purchasing some of our publications. Besides our best selling "Weeds of the West" book (we have sold over 160,000), we have a variety of other weed identification resources and last year posted the publication "Weed Control in Natural Areas in the Western United States" for sale. These resources can be used for teaching or self education. You can check out all of the publications by going to our website ([www.wsweedsociety.org](http://www.wsweedsociety.org)) and clicking on "Store" located at the top of the page. When you are giving public presentations about weed identification please let your audience know about these resources. There is an order form for our publications in this Newsletter. Contact me for discounts on bulk orders.

If you need to contact the office, please give us a call at (575) 527-1888 or e-mail at [wsws@marathonag.com](mailto:wsws@marathonag.com).

Phil Banks, WSWS Business Manager/Treasurer

# WASHINGTON REPORT

March 4, 2014  
Lee Van Wychen

## **2014 Farm Bill Becomes Law**

After more than two years of negotiating and two extensions of the 2008 Farm Bill, the President signed a new Farm Bill into law on February 7th. Led by the “Four Principals” - Agriculture Committee Chairs Senator Debbie Stabenow (MI) and Congressman Frank Lucas (OK), and Ranking Members Senator Thad Cochran (MS) and Congressman Collin Peterson (MN), the new law is largely seen as a victory for research, education, and extension. Most notably, the Research Title of the Farm Bill creates a new nonprofit foundation, the Foundation for Food and Agriculture Research (FFAR) that is intended to complement--not replace--USDA's research, education, extension, and economics activities conducted mainly by the National Institute of Food and Agriculture (NIFA), the Agricultural Research Service (ARS), and the Economic Research Service (ERS).

FFAR is modeled after existing Foundations that were established to leverage private funding such as the Foundation for the National Institutes of Health and the National Fish and Wildlife Foundation. FFAR will have \$200 million in mandatory funding as a match to solicit private donations for additional research on plant health; animal health; food safety and nutrition; renewable energy, natural resources and environment; agricultural and food security; technology; and agricultural economics and rural communities. FFAR will be led by a Board of Directors comprised of 15 members, of which 8 will be recommended by the National Science Foundation and 7 by industry. All 15 members will be appointed by the Secretary of Agriculture and four other ex-officio Agency scientists. This public-private partnership represented by FFAR could be very beneficial for advancing weed management research and innovation.

Another highlight from the Research Title in the new farm bill is that it provides \$80 million per year for the Specialty Crop Research Initiative (SCRI) and \$20 million per year for the Organic Agriculture Research and Extension Initiative (OREI). These programs have been stranded without funding since 2012. The new funding levels are significant increases for both programs compared to the 2008 Farm Bill levels. In addition, the new funding that is authorized for SCRI is permanent funding.

Unfortunately, there were a couple issues that didn't go quite the way we would have liked them too. One was a House provision that will require non-governmental organizations and private research institutions to provide a 100% match on all competitive research grants. However, the land grant universities are exempt from this matching funds requirement.

The biggest disappointment is that Sen. Stabenow did not allow inclusion of the National Pollutant Discharge Elimination System (NPDES) fix language that was in the House version of the Farm Bill. There was strong bipartisan support for this language in both houses of Congress that would have clarified Congress's intent for the regulation of pesticides applied to or near water. As you know, pesticides are regulated through FIFRA, including sites to which pesticides can be applied. However in 2009, a three judge U.S. Circuit Court panel ruled that pesticide applications to or near waters required additional processing under the Clean Water Act, NPDES permits. These permits impose additional resource and liability burdens on small businesses, farms, municipalities, state agencies, and federal agencies. The National and Regional Weed Science Societies have supported a legislative fix for this issue since the Circuit Court ruling and will continue to support efforts to resolve this issue going forward.

Last but not least, I wanted to put in a reminder about the noxious weed control provision in the Commodity Title that has been in effect since the 2002 Farm Bill. In order for farmers to receive payments under the Commodity Title, the farmers shall agree ---- “to effectively control noxious weeds and otherwise maintain the land in accordance with sound agricultural practices, as determined by the Secretary.” The provision is part of the “Producer Agreements” section that also discusses conservation compliance for Highly Erodible Land and Wetland Conservation. The Farm Service Agency (FSA) and the Natural Resources Conservation Service (NRCS) have primary responsibility for enforcing these requirements. Having to “effectively control noxious weeds” and maintain conservation compliance is a pretty fair tradeoff, in my opinion, for the taxpayer subsidies that cover about 60 percent of the cost of each crop insurance premium.



### **Jacobs-Young Named New ARS-Administrator**

On February 24<sup>th</sup>, Dr. Chavonda Jacobs-Young was named Administrator for the USDA Agricultural Research Service (ARS) by USDA's Chief Scientist, Dr. Cathy Woteki. Dr. Jacobs-Young recently served as ARS Associate Administrator for National Programs, where she led the Office of National Programs which manages the research objectives of the Agency. Prior to moving into her role at ARS, she served as the Director of the Office of the Chief Scientist at USDA as well serving as the Acting Director for USDA-NIFA.

Dr. Jacobs-Young is a native of Georgia. She holds M.S. and Ph.D. degrees in Wood and Paper Science and a B.S. degree in Pulp and Paper Science and Technology from North Carolina State University. She also is a graduate of American University's Executive Leadership in Public Policy Implementation Program.

### **EPA Seeks Comments on Draft Guidance Documents for Evaluating Spray Drift**

EPA announced the availability of two draft guidance documents for public comment. These documents describe how off-site spray drift will be evaluated for ecological and human health risk assessments for pesticides. The January 29, 2014, Federal Register Notice specifically seeks public input on approaches that include:

- a policy for conducting human health risk assessments associated with the potential for exposure from off-site drift during pesticide applications and
- an updated method for estimating environmental exposures associated with spray drift.

The 60-day public comment period will close on March 31, 2014. For details and to submit comments, please go to: <http://www.regulations.gov/#!documentDetail;D=EPA-HQ-OPP-2013-0676-0001>

### **EPA Seeks Comments on New Worker Protection Standards**

New proposed rules meant to safeguard farm workers from pesticide exposure were announced February 20<sup>th</sup> by the EPA. The proposed regulations are the first updating of its Worker Protection Standard (WPS) in 20 years. Proposed changes to the WPS include:

- Increased frequency of mandatory trainings (from once every five years to annually) to inform farm workers about the protections they are afforded under the law, including restrictions on entering pesticide-treated fields and surrounding areas, decontamination supplies, access to information and use of personal protective equipment. Expanded trainings will include instructions to reduce take-home exposure from pesticides on work clothing and other safety topics.
- Expanded mandatory posting of no-entry signs for the most hazardous pesticides; the signs prohibit entry into pesticide-treated fields until residues decline to a safe level.
- First time-ever minimum age requirement: Children under 16 will be prohibited from handling pesticides, with an exemption for family farms.
- No-entry buffer areas surrounding pesticide-treated fields will protect workers and others from exposure from pesticide overspray and fumes.
- Measures to improve the states' ability to enforce compliance including requiring employers to keep records of application-specific pesticide information as well as farm worker training and early-entry notification for two years.
- Personal Protection Equipment (respirator use) must be consistent with the Occupational Safety & Health Administration standards for ensuring respirators are providing protection, including fit test, medical evaluation, and training.
- Make available to farm workers or their advocates (including medical personnel) information specific to the pesticide application, including the pesticide label and Safety Data Sheets.
- Additional changes make the rule more practical and easier to comply with for farmers.
- Continues the exemptions for family farms.

For details and to submit comments, please go to:

<http://www.epa.gov/oppfead1/safety/workers/proposed/index.html>

### **Drought Forecasting Program Reauthorized**

The House and Senate expeditiously passed legislation and the President signed into law (P.L. 113-86) a measure that reauthorizes the National Oceanic and Atmospheric Administration's system for monitoring and forecasting droughts nationwide. P.L. 113-86 authorizes \$13.5 million for the National Integrated Drought Information System each year from fiscal 2014 through 2018. The program was authorized at \$16 million in fiscal 2012, which is when its funding expired. The measure specifies which agencies should be consulted for the National Integrated Drought Information

System's forecasts. It also would require the system to monitor the effects of droughts, including on water supplies and soil moisture, and to coordinate federal, state, regional, public, private and academic early-warning research.

### **Secretary Vilsack Announces Seven Regional Climate Hubs**

On February 5<sup>th</sup>, USDA Secretary Vilsack announced the creation of the first ever Regional Hubs for Risk Adaptation and Mitigation to Climate Change at seven locations around the country. "Climate Hubs" will address increasing risks such as fires, invasive pests, devastating floods, and crippling droughts on a regional basis, aiming to translate science and research into information to farmers, ranchers, and forest landowners on ways to adapt and adjust their resource management. Vilsack said "USDA's Climate Hubs are part of our broad commitment to developing the next generation of climate solutions, so that our agricultural leaders have the modern technologies and tools they need to adapt and succeed in the face of a changing climate."

The Hubs will provide outreach and information to producers on ways to mitigate risks; public education about the risks climate change poses to agriculture, ranchlands and forests; regional climate risk and vulnerability assessments; and centers of climate forecast data and information. They will also link a broad network of partners participating in climate risk adaptation and mitigation, including universities; non-governmental organizations; federal agencies such as the Department of Interior and the National Oceanic and Atmospheric Administration; Native Nations and organizations; state departments of environment and agriculture; research centers; farm groups and more.

The Hubs were chosen through a competitive process among USDA facilities. In addition to the seven Hubs, USDA is designating three Subsidiary Hubs ("Sub Hubs") that will function within the Southeast, Midwest, and Southwest. The Sub Hubs will support the Hub within their region and focus on a narrow and unique set of issues relative to what will be going on in the rest of the Hub. The Southwest Sub Hub, located in Davis, California, will focus on specialty crops and Southwest forests, the Southeast Sub Hub will address issues important to the Caribbean, and the Midwest Sub Hub will address climate change and Lake State forests.

The following locations have been selected to serve as their region's center of climate change information and outreach to mitigate risks to the agricultural sector:

- **Midwest:** National Laboratory for Agriculture and the Environment, Agricultural Research Service, Ames, Iowa
- Midwest Sub-Hub in Houghton, Michigan
- **Northeast:** Northern Research Station, Forest Service, Durham, New Hampshire
- **Southeast:** Southern Research Station, Forest Service, Raleigh North Carolina
- Southeast Sub-Hub in Rio Piedras, Puerto Rico
- **Northern Plains:** National Resources Center, Agricultural Research Service, Fort Collins, Colorado
- **Southern Plains:** Grazinglands Research Lab, Agricultural Research Service, El Reno, Oklahoma
- **Pacific Northwest:** Pacific Northwest Research Station, Forest Service, Corvallis, Oregon
- **Southwest:** Rangeland Management Unit/Jornada Experimental Range, Agricultural Research Service, Las Cruces, New Mexico
- Southwest Sub-hub in Davis, California

Lee Van Wychen, Ph.D.  
Science Policy Director  
National and Regional Weed Science Societies  
5720 Glenmullen Place  
Alexandria, VA 22303  
[Lee.VanWychen@wssa.net](mailto:Lee.VanWychen@wssa.net)  
cell: 202-746-4686  
[www.wssa.net](http://www.wssa.net)

# **REQUEST FOR WSWS FELLOW AND HONORARY MEMBER NOMINATIONS**

**BY**

**Dr. Tim Miller, Committee Chair**

**Now is your chance to nominate deserving colleagues as a WSWS Fellow or Honorary Member!**

## **WSWS FELLOW**

### **WSWS Guidelines for Nominating Fellows**

**Fellows of the society are members who have given meritorious service to the Western Society of Weed Science.**

The nominator must contact the member to be nominated and request them to prepare a concise [2-3 page] resume.

- a. The nominee must be involved in the process. The most pertinent information about the nominee can only be obtained from the nominee.
- b. The nominee's resume should be based on the WSWS guidelines approved by the Board of Directors (see below).
- c. Information from the resume will be used by the nominator in writing the letter of nomination.
- d. The nominator also is responsible for soliciting two letters of support for the nominee. The letters should be sent to the nominator and included in the nomination package sent to the committee.
- e. The nomination package should include the nominee's vita, the nominator's letter of nomination, and two support letters.

### **SERVICE TO WSWS – Please address the following points in the resume:**

1. **Officer:** President; Vice-President; Secretary, Research Section Chair; Education & Regulatory Section Chair; Editor; Other.
2. **Committees:** Standing; Special; Ad Hoc.
3. **Presentations and Publications:** WSWS – Papers, Proceedings, Research Progress
4. **Service to other Weed Science Societies:** Weed Science Society of America; State Organizations.
5. **Academic Weed Science Endeavors:** Teacher; Graduate Students; Refereed Publications; Extension Publications, Books; Popular Publications; Academic Weed Science Pursuits; Other.
6. **Industry Weed Science Endeavors:** Sales and Marketing; Research and Development; Regional Manager; Product Manager.
7. **Other Meritorious Weed Science Service**

## **WSWS HONORARY MEMBER**

### **WSWS Guidelines for Nominating Honorary Members**

**Honorary members are selected from individuals whose activities have been largely from outside the Western Society of Weed Science, but who have significantly contributed to the field of weed science.**

- The nominator must contact the person to be nominated and request them to prepare a vita.
- The nominator will then prepare a letter summarizing the nominee's contribution to the area of weed science with emphasis on how the interests of the WSWS have been served by this non-member.
- Include the vita with the letter of nomination to provide all pertinent information to the Committee.

**NOMINATIONS FOR FELLOW AND HONORARY MEMBER PACKAGES ARE DUE BY DECEMBER 1, 2014**

**TO:**

*Electronic submission preferred.*

**Dr. Tim Miller**

**WSU-Mount Vernon NWREC**

**16650 SR 536**

**Mount Vernon, WA 98273**

**(360) 848-6138 twmiller@wsu.edu**

# Call for Program Proposals for the 8<sup>th</sup> International IPM Symposium

"IPM—Solutions for a Changing World" is the theme of the 8<sup>th</sup> International IPM Symposium to be held **March 23–26, 2015** in Salt Lake City Utah USA at the Salt Palace Convention Center. You are invited to submit a proposal for a session describing your program, activity, or research that addresses effective and efficient pest management. The symposium sessions will be divided into tracks based on commodity or setting and will address various aspects of Integrated Pest Management (IPM) across disciplines and around the world.

<http://ipmcenters.org/ipmsymposium15>

Sessions will be organized by these tracks, although others will be considered.

- Fruit & Nut Crops
- Rangeland/Livestock/Pastures/Turf and Sod/Natural Landscapes/Forestry
- Row/Agronomic Crops/Field Crops
- Specialty Crops: Nursery, Greenhouse, Hydroponic, Ornamental
- Urban/Structural/Landscape/School/Public Health
- Vegetable Crops

Priority will be given to submissions that address these aspects of IPM within the six tracks, although others will be considered.

- Breakthroughs in new pesticides, biocontrol agents and biopesticides
- Decision-making technology
- Funding and policy issues
- IPM from a global perspective
- IPM challenges and successes
- IPM partnerships
- Leading through education and outreach
- New tools for the IPM toolbox
- Organic and sustainable pest management
- Invasive and new problem species (plants, insects, diseases, etc.)
- Regulatory updates
- Techniques to increase IPM adoption

Sessions will be organized in 1-hour time blocks. Organizers may submit sessions that take more than 1 hour, but must accommodate a 15-minute break after each 1 hour segment.

We are planning two types of session formats for the program.

- Mini-symposia should have a broad interest with estimated audiences of 75-100 people.
- Roundtable discussions/workshops will likely be topic specific, maybe involving hands-on activities, attracting 20-30 attendees.

Session abstracts should be limited to 250 words.

Session proposals must be submitted online by **April 25, 2014** for full consideration. Here is the online form:

[www.regonline.com/IPMproposals](http://www.regonline.com/IPMproposals)

The number of each type of session will be limited due to space and time constraints. The program planning committee will review all proposals and try to accommodate as many as possible.

As at past symposia, limited "Program Enhancement" funds for speaker support are anticipated. Preference will be given to speakers who would not normally attend the event. Details about requests for these funds will be made available after the proposals have been submitted.

This is a call for oral presentations; a call for poster submissions will be announced later this year.

Contact Elaine Wolff, [wolff1@illinois.edu](mailto:wolff1@illinois.edu), to learn more about attending, exhibiting at or contributing to the Symposium.

<http://ipmcenters.org/ipmsymposium15>

## Call for Symposia Titles for the 68<sup>th</sup> Annual Meeting

Members of the WSWs are invited to submit proposals for symposia at the 68th Annual Meeting to be held at the Hilton Portland and Executive Tower in Portland, Oregon from March 9-12, 2015. The WSWs program committee will receive proposals and then evaluate all of the proposed symposia based on the following criteria: 1) how well they are justified, 2) the target audience, 3) the completeness of the agenda, and 4) the detailed budget.

The program committee together with the WSWs Board of Directors may approve full or half-day symposia for the annual meeting. An allowable budget of up to \$2000 can support travel expenses for invited nonmember speakers. Include estimated travel and lodging costs for invited speakers (no honoraria will be paid to symposium participants) plus any other anticipated expenses (food & beverages, etc.) in the budget. Although funds have been budgeted for the symposia, the goal is to spend the least amount necessary to obtain excellent symposia speakers. Please use the **WSWS ANNUAL MEETING SYMPOSIUM PROPOSAL FORM**, which can be found on the WSWs homepage ([www.wsweedscience.org](http://www.wsweedscience.org)). Symposium proposals can be e-mailed directly to Joe Yenish ([jpyenish@dow.com](mailto:jpyenish@dow.com)) and are due **June 15, 2014**. Proposals for future meetings beyond the 2015 Portland meeting are also encouraged. The WSWs annual meeting will be held in Albuquerque in 2016. Topics that are relevant for a local audience are encouraged so that WSWs can reach out to end users with knowledge and technology.

Recent past symposia topics have included: Tree & Vine Weed Control, Ecology and Management of Downy Brome, *Ventemata dubia*, Invasive Toadflax, Ecological Effects of Invasive Plants, Kochia, Invasive Grasses, Jointed Goatgrass, Biological Control of Invasive Plants, Adjuvant Technology, Arundo/Phragmites, Application Technology, Knotweed, Crop Protection Chemistry vs. Genetically Modified Crops, Dose Response Functions, and Salt Cedar. Abstracts of symposium presentations will be included in the proceedings; therefore, symposium organizers are responsible for ensuring all electronic title and abstract submissions.

We look forward to your symposia proposals. If you have any questions, don't hesitate to call Joe Yenish, President-elect and Program Chairperson, at (406) 690-6260.

---

---

### 2014 Membership Renewal Form for the Western Society of Weed Science

(To pay by credit card, please go to [www.wsweedscience.org](http://www.wsweedscience.org) and login to your account)

**IF YOU DID NOT ATTEND THE ANNUAL MEETING BUT WANT TO REMAIN A MEMBER, FILL IN THE INFORMATION BELOW AND SEND \$ 30.00 FOR DUES TO THE ADDRESS GIVEN.**

---

<b>Last name</b>	<b>First name</b>	<b>Affiliation</b>
------------------	-------------------	--------------------

---

<b>Mailing address</b>	<b>City</b>	<b>State</b>	<b>Zip code</b>
------------------------	-------------	--------------	-----------------

---

<b>Phone # w/area code</b>	<b>e-mail address</b>
----------------------------	-----------------------

**Classification:** Student \_\_\_ University \_\_\_ Federal Agency \_\_\_ State Agency \_\_\_  
Private Industry (manufacturing and sales) \_\_\_ Private Industry (consulting) \_\_\_  
Unemployed \_\_\_ Retired \_\_\_ other (specify) \_\_\_\_\_

Send to: WSWs/Phil Banks  
205 W. Boutz, Bldg 4, Ste 5  
Las Cruces, NM 88005

# Publications Available From the Western Society of Weed Science

(All prices include shipping and handling; bulk orders may be discounted, see below)

_____ Weeds of the West.....	\$34.00
_____ Aquatic and Riparian Weeds of the West.....	\$45.00
_____ Weeds of California and Other Western States.....	\$85.00
_____ Broadleaf and Grass Weeds of the West (CD only, 2 discs).....	\$50.00
_____ Weed Control in Natural Areas in the Western United States .....	\$40.00
_____ Interactive Encyclopedia of North American Weeds DVD.....	\$50.00

Total \_\_\_\_\_

All publications can be ordered online at [www.wsweedscience.org](http://www.wsweedscience.org)  
(click on online store)

To order by mail and pay by check, send this completed form with payment to: WSWS Business Manager, 205 W. Boutz Rd, Bldg 4, Ste 5, Las Cruces, NM 88005. **Contact the Business Manager (Phil Banks) at 575-527-1888 for bulk order prices.**

Shipping Information:

Name: \_\_\_\_\_

Address: \_\_\_\_\_ City: \_\_\_\_\_

State: \_\_\_\_\_ Zip Code: \_\_\_\_\_ Telephone: \_\_\_\_\_

e-mail: \_\_\_\_\_



Western Society of Weed Science  
205 W. Boutz, Bldg. 4, Ste. 5  
Las Cruces, NM 88005